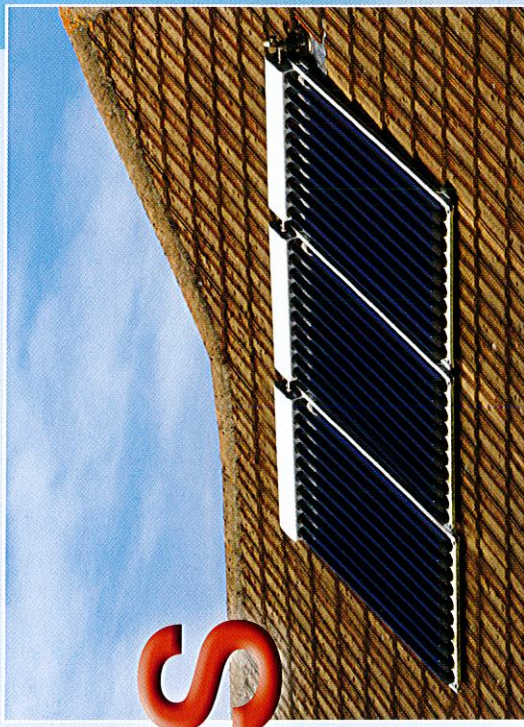


Why Dux Solar Collectors are ‘flat-out’ better than tube systems?

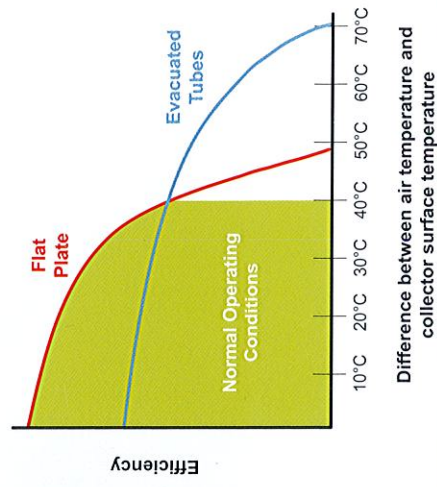
Make sure you have all the facts when choosing your solar panels.



The Cold Hard Truth...

- STCs are a great way to compare the performance of solar systems as it takes into account the combined efficiency of the collectors, tank and controller. The higher the STC, the better the performance. Just comparing collector efficiency is not a true measure of solar system performance.
- Dux Flat Plate Solar Collectors are made out of toughened glass whilst evacuated tubes are manufactured in a similar way to fluorescent tubes so are more prone to breakage.
- As shown in the graph, flat plate collectors outperform evacuated tubes when the difference between air temperature and collector surface temperature is less than 40°C (typical operating conditions).
- Put simply, flat plate collectors perform better in producing domestic hot water temperatures under low ambient conditions¹.

Collector Efficiency Graph



For a selection of hot water products with impeccable environmental credentials and to easily calculate any applicable State and Federal Government rebates, visit www.dux.com.au



¹. Low ambient conditions are described as ambient air temperatures up to 25°C